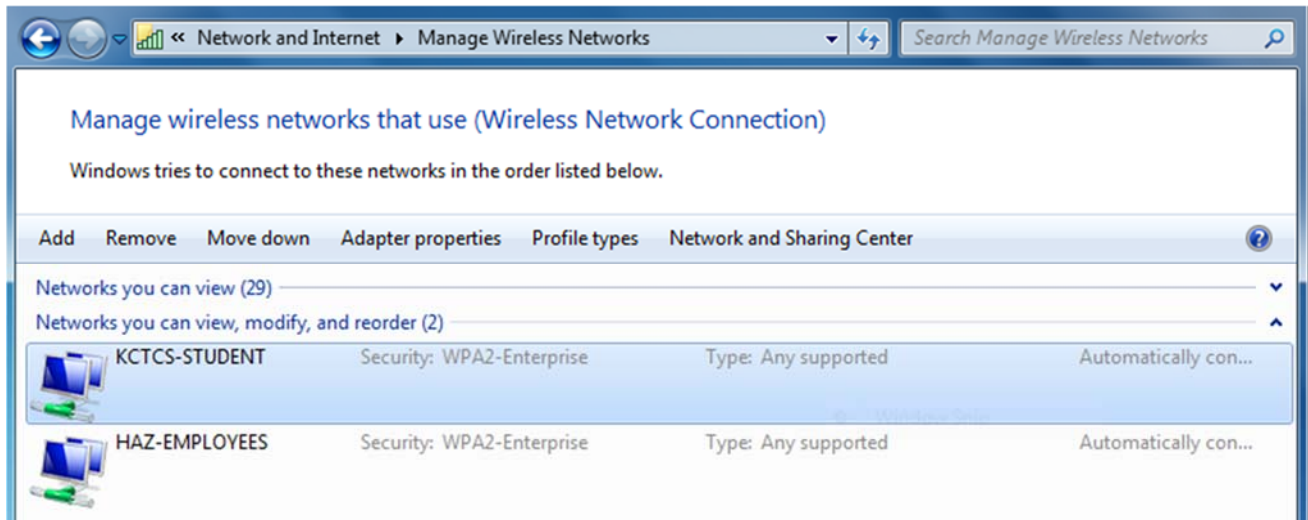


# Hazard Community and Technical College

## Windows 7 Wireless Connectivity

**Note:** Employees can also use these settings for the KCTCS-EMPLOYEE wireless network.

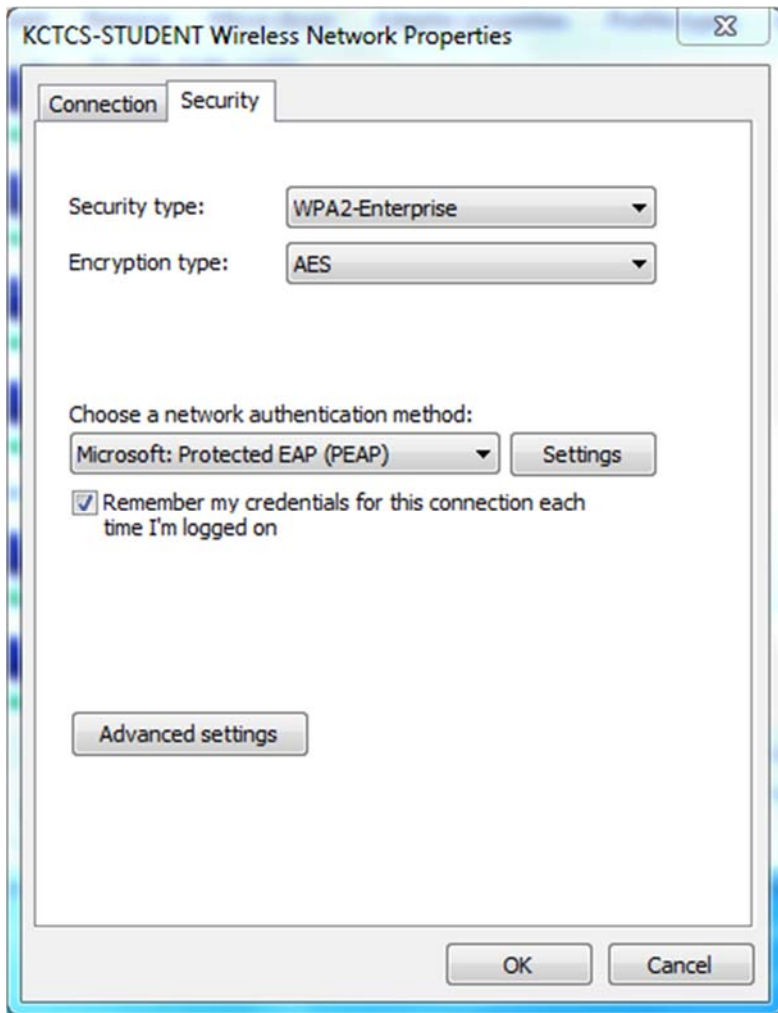
1. In the list of available networks choose **KCTCS-STUDENT**.
  - a. If you were unsuccessful authenticating to KCTCS-STUDENT
    - i. Go to Control Panel -> Network and Internet -> **Manage Wireless Networks** and you should see the following screen:
    - ii. You will then want to check the profile for this network
2. To check the profile right-click on KCTCS-STUDENT and select Properties.



3. Click on the **Security** Tab.

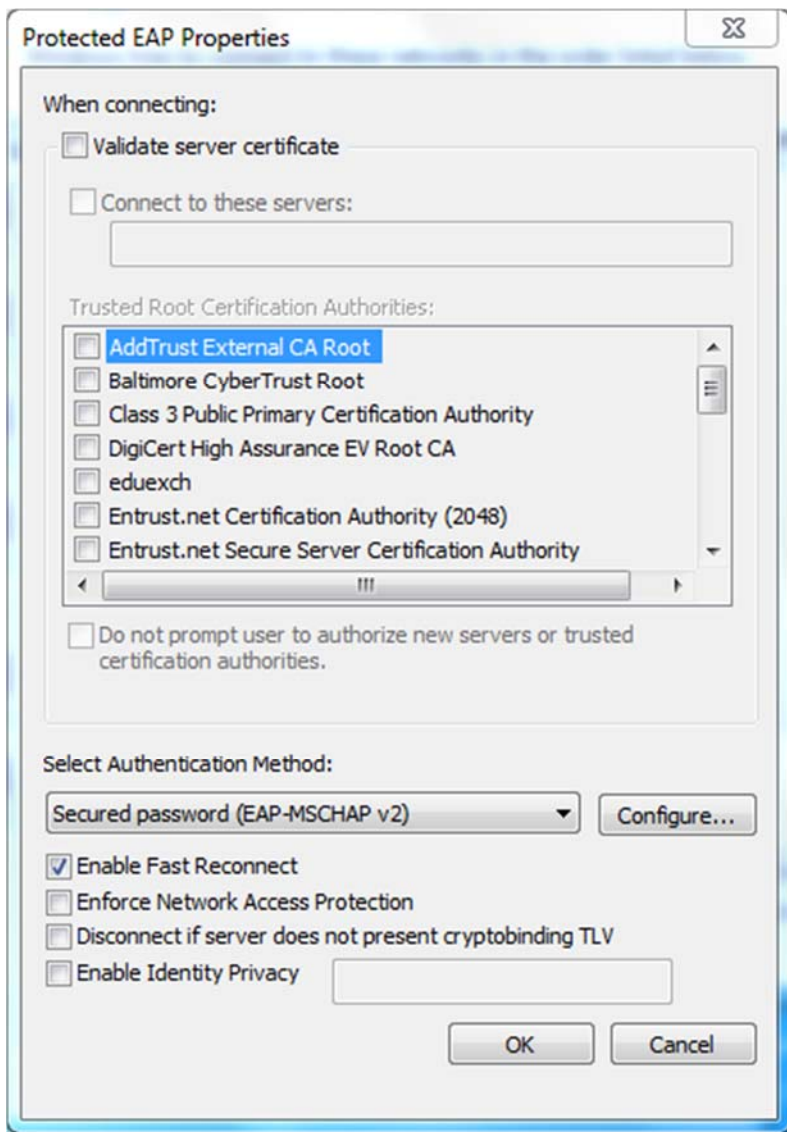
Continued...

4. Confirm the screen is configured as shown below. Under Choose a network authentication method, click the **Settings** button.



*Continued...*

5. Confirm the screen is configured as shown below. Under Select Authentication Method, click the **Configure** button.



Continued...

6. Confirm the box next to Automatically use my Windows logon name and password (and domain if any) is **unchecked**.



7. You should now be able to connect to the KCTCS-STUDENT wireless network. If you still have a problem with the connection, please contact the Helpdesk at (606) 487-3473.